



## **BASIC HYDRO KIT**

It is the most economical hydro massage equipment, realized with manual controls, that can be placed in the preferred position. Air regulation is manual and the regulator is equipped with a check valve integrated in its body. The jets suggested for the installation are the Multijets with horizontal water connection, diam. 25mm, for mounting with clips.

As the nozzle of the jet is adjustable, scale/encrustation can be easily removed through the movement. The massage spray is quite strong and the Venturi mixture of air and water very well balanced.

This jet allows a complete closing of both water and air.

Drainage from the jet body is granted by its "Y" shaped connections.

The multijet is available also with water connection diam. 32mm.

Other types of jets can be evaluated: the MAXI JET, traditional model for clip and glue mounting, with open-closed function, adjustable nozzle and anti-scale device; FLAT JET with the new minimal flat cover plate; the MINIJET of small dimensions, for clip and glue mounting, with anti-scale device and revolving nozzle. Also available the new innovative SQUARE JET.

The suction body is a 90° elbow and allows the mounting both with clips and with glue.

Basic Hydro kit is available both in chrome and white finishing.

The kit is offered with all pipes and fittings needed for installation. All the parts composing the kit are MADE IN ITALY.

## ISKMUL6V255 BASIC HYDRO KIT with Multijets

Item code	Description	Nr/Mt	
1	ISJBO3F0200	3F SUCTION UNIT WITHOUT MEMBRANE	1
2	ISJPL3F0105	3F SUCTION COVER CHROME	1
3	ISPSFLAT05	FLAT PNEUMATIC PUSH CHROME	1
4	ISPRFLAT05	FLAT AIR REGULATOR CHROME	1
5	ISRTURA0203	RAUCLAIR PIPE PVC INT. DIA. 3 MM	1
6	ISJBMUJVA255E	MULTIJET V D.25 OPEN CHROME NOZZLE	4
7	ISJPLMFL05	MULTIJET FLAT COVER PLATE CHROME	6
8	ISJBMUJVC25D5E	MULTIJET V D.25 CLOSE RIGHT CHROME NOZZLE	1
9	ISJBMUJVC25S5E	MULTIJET V D.25 CLOSE LEFT CHROME NOZZLE	1
10	ISRLSMTAN25E	TEE NO GLUE EXT. DIA. 25/25 P RING	1
11	ISRFA000313	INOX BIF. CLIP 313 FOR PIPE DIA. 24,5X30,5	12
12	ISRFA000202	INOX BIF. CLIP 202 FOR PIPE DIA. 14,5X19,5	12
13	ISRTUBE24535	PVC PIPE FOR WATER DIA. 24,5X30,5	3,5
14	ISRTUBE14519	PVC PIPE FOR AIR DIA. 14,5X19,5	3,5
15	ISRFA000258	INOX BIF. CLIP 258 FOR AIR JET AIR CONN.	2
16	ISRTURE0219	RETEX PIPE PVC INT. DIA. 19X25	0,1
17	ISRTE001620	TEE DIA. 16/20/20	1
18	AMVC0601DRM	CENTRAL PUMP 60 HP 0,71 + SWITCH	1
19	ISRASMG450	ELBOW 45° SMART PUMP	1
20	ISRFA000340	INOX CLIP 40X60	4
21	ISRTUFL0232	FLEX PIPE PVC DIA. 32X40 MM	1,3
22	ARASMP000	SOFT PVC COUPLING FOR PUMP/SUCTION	2



### MINIJET

The suggested Basic Hydro Kit can be installed also with our minijet with y-piece. This article is sold separated. Please, have a look at the codes:

<b>ISJBO020201</b>	<b>MINIJET SKAT PVC</b>
<b>ISJPLS20105</b>	<b>MINI JET COVER ABS SKAT CHROME</b>
<b>ISJSES20105</b>	<b>MINI JET SKAT EYEBALL CHROME</b>
	<b>+ Y coupling ext. diam. 25mm</b>
<b>ISRYMJDE25</b>	<b>MINIJET Y COUPLING EXT. DIAM. 25</b>

For further details, please go to the general section of components and look for MINIJET.



### JET

Also the standard jet with Y- piece can be evaluated for installation in the Basic Hydro Kit. This article is sold separated. Please, have a look at the codes:

<b>ISJBO0102NS</b>	<b>JET BODY PVC</b>
<b>ISJPL010105</b>	<b>JET COVER ABS CHROME</b>
<b>ISJRO01NS5</b>	<b>FLOWER JET NOZZLE ABS CHROME</b>
<b>ISJRAYJETE32</b>	<b>JET Y COUPLING EXT. DIAM. 32</b>
<b>ISJRAYJETI32</b>	<b>JET Y COUPLING INT. DIAM. 32</b>
<b>ISRYJETCE32</b>	<b>JET Y COUPLING BLIND EXT. DIAM.32</b>
<b>ISRYJETCI32</b>	<b>JET Y COUPLING BLIND INT. DIAM.32</b>

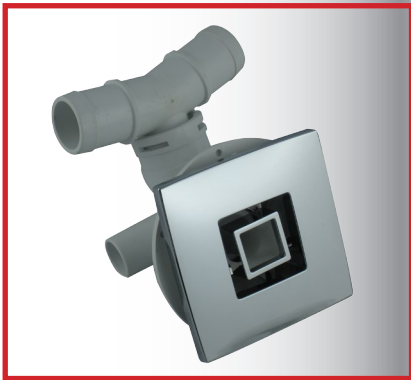
For further details, please go to the general section of components and look for MAXI JET.



### **FLAT JET**

With the new Flat design, it is the “minimal” alternative to Maxi jet.  
Available for installation with clamps.  
Water inlet dia. 32 or 25 mm / Air inlet 20 or 16 mm.

Pls go to general section of components for details.



### **SQUARE JET**

For minimal square bathtubs, the square jet is really an exclusive and original design choice!  
Available for installation with clamps.  
Water inlet dia. 32 or 25 mm / Air inlet 20 or 16 mm.

Pls go to general section of components for details.